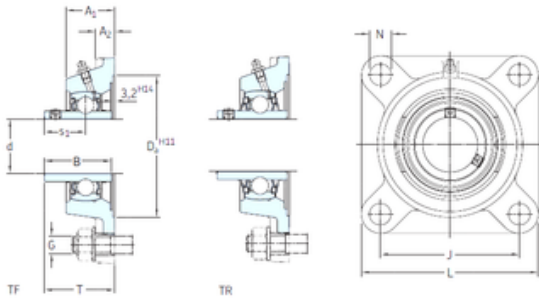




PCIF BEARING LIMITED

skf fj75 tf bearing

Bearing No. fj75 tf



fj75 tf Bearing 2D drawings and 3D CAD models

Bore Diameter	75 mm
d	75 mm
Da	179,4 mm
s1	46,1 mm
A1	53,6 mm
B	73,1 mm
G	16 mm
J	159 mm
L	200 mm
N	19 mm
T	80,1 mm
A2	22,1 mm
Weight	6,80 Kg
Basic dynamic load rating (C)	66,3 kN
Basic static load rating (C0)	49 kN
Fatigue load limit (Pu)	2,04
Category	Bearings
Inventory	0.0
Manufacturer Name	SKF
Minimum Buy Quantity	N/A
UNSPSC	31171501
Weight / Kilogram	6.318
EAN	7316570116717
Product Group	M06110
Housing material	Cast iron
D _a	179.4 mm



PCIF BEARING LIMITED

D_{b1}	154 mm
D_{b2}	166 mm
A	53.5 mm
A_1	22 mm
A_3	3.2 mm
s_1	46.3 mm
R_G	1/4-28 UNF
R_1	35 mm
D_N	6.5 mm
SW_N	7 mm
G_N	1/4-28 SAE-LT
J_6	176 mm
J_7	51.5 mm
N_4	4 mm
Basic dynamic load rating C	66.3 kN
Basic static load rating C_0	49 kN
Fatigue load limit P_u	2.04 kN
Limiting speed	2600 r/min
Mass bearing unit	6.2 kg
Thread grub screw G_2	M10x1
Hexagonal key size for grub screw N	5 mm
Recommended tightening torque for grub screw	16.5 N · m
Recommended diameter for attachment bolts, mm G	16 mm
Recommended diameter for attachment bolts, inch G	0.625 in
Housing	FYJ 515
Bearing	YAR 215-2F