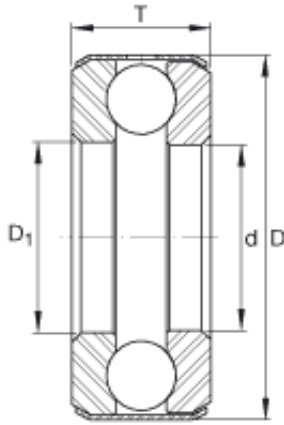




PCIF BEARING LIMITED



ina d5 bearing

Bearing No. d5

Size	19.05x37.313x14.3 mm
Bore Diameter	19,05 mm
Outer Diameter	37,313 mm
Width	14,3 mm
d	3/4 inch
d	19,05 mm
D	1,469 inch
D	37,313 mm
T	0,563 inch
T	14,3 mm
D ₁	0,781 inch
m	0,15 lbs / Weight
m	70 g / Weight
C _a	4250 lbf / Dynamic load rating (axial)
C _a	18900 N / Dynamic load rating (axial)
C _{0a}	7300 lbf / Static load rating (axial)
C _{0a}	32500 N / Static load rating (axial)
Category	Thrust Ball Bearing
Inventory	30.0
Manufacturer Name	SCHAEFFLER GROUP
Minimum Buy Quantity	N/A
Weight / Kilogram	0
EAN	4012802034707

d5 Bearing 2D drawings and 3D CAD models



PCIF BEARING LIMITED

Product Group	B04270
Rolling Element	Ball Bearing
Thrust Bearing	Yes
Single or Double Direction	Single Direction
Banded	Yes
Cage Material	Steel
Precision Class	ABEC 1 ISO P0
Component Description	Roller Assembly Plus Raceways
Other Features	Single Row
Long Description	3/4" Bore 1; 25/32" Bore 2; 1-15/32" Outside Diameter; 9/16" Height; Ball Bearing; Single Direction; Banded; Steel Cage; ABEC 1 ISO P0 Precision
Inch - Metric	Inch
Category	Thrust Ball Bearings
UNSPSC	31171552
Harmonized Tariff Code	8482.10.50.08
Noun	Bearing
Keyword String	Ball Thrust
Manufacturer URL	http://www.ina.com
Weight / LBS	0.154
Outside Diameter	1.469 Inch 37.313 Millimeter
Overall Height with Aligning Washer	0 Inch 0 Millimeter
Bore 2	0.781 Inch 19.837 Millimeter
Height	0.563 Inch 14.3 Millimeter
Bore 1	0.75 Inch 19.05 Millimeter